

distinctive  
steel  
window  
systems

OTTOSTUMM | **mogs**

## FerroFinestra TB

The FerroFinestra TB (Thermal Barrier) system was developed from the need to preserve exactly the same design as the original FerroFinestra, in a thermal break version. The innovative insulating materials used to make the thermal break, together with the possibility of installing high-performance insulating glazing, make it possible to fully comply with international regulations on the energy containment of buildings and contemporary living comfort requirements. From the W50TB system to the W75TB, with increased depth, up to the WLS72 TB lifting and sliding openings, FerroFinestra TB responds to the most demanding projects, for all types of windows and doors where high aesthetic and performance features are expected. Extensive dedicated accessories, multiple finishes, in every type of opening.

FerroFinestra TB is also available in Architectural Bronze. See the specific brochure.

Il sistema FerroFinestra TB – Thermal Barrier - nasce dall'esigenza di mantenere esattamente le stesse sagome dell'originale FerroFinestra, in versione a taglio termico. Gli innovativi materiali isolanti utilizzati per la realizzazione del taglio termico, unitamente alla possibilità di installare vetri isolanti ad alte prestazioni, permettono di rispondere appieno alle normative internazionali sul contenimento energetico degli edifici e alle contemporanee esigenze di comfort abitativo. Dal sistema W50TB al W75TB, con profondità maggiorata, fino all'alzante scorrevole WLS72 TB, FerroFinestra TB risponde ai progetti più esigenti, per tutte le tipologie di infissi dove siano previsti alti requisiti estetici e prestazionali. Vasta accessoristica dedicata, molteplici finiture, in ogni tipologia di apertura.

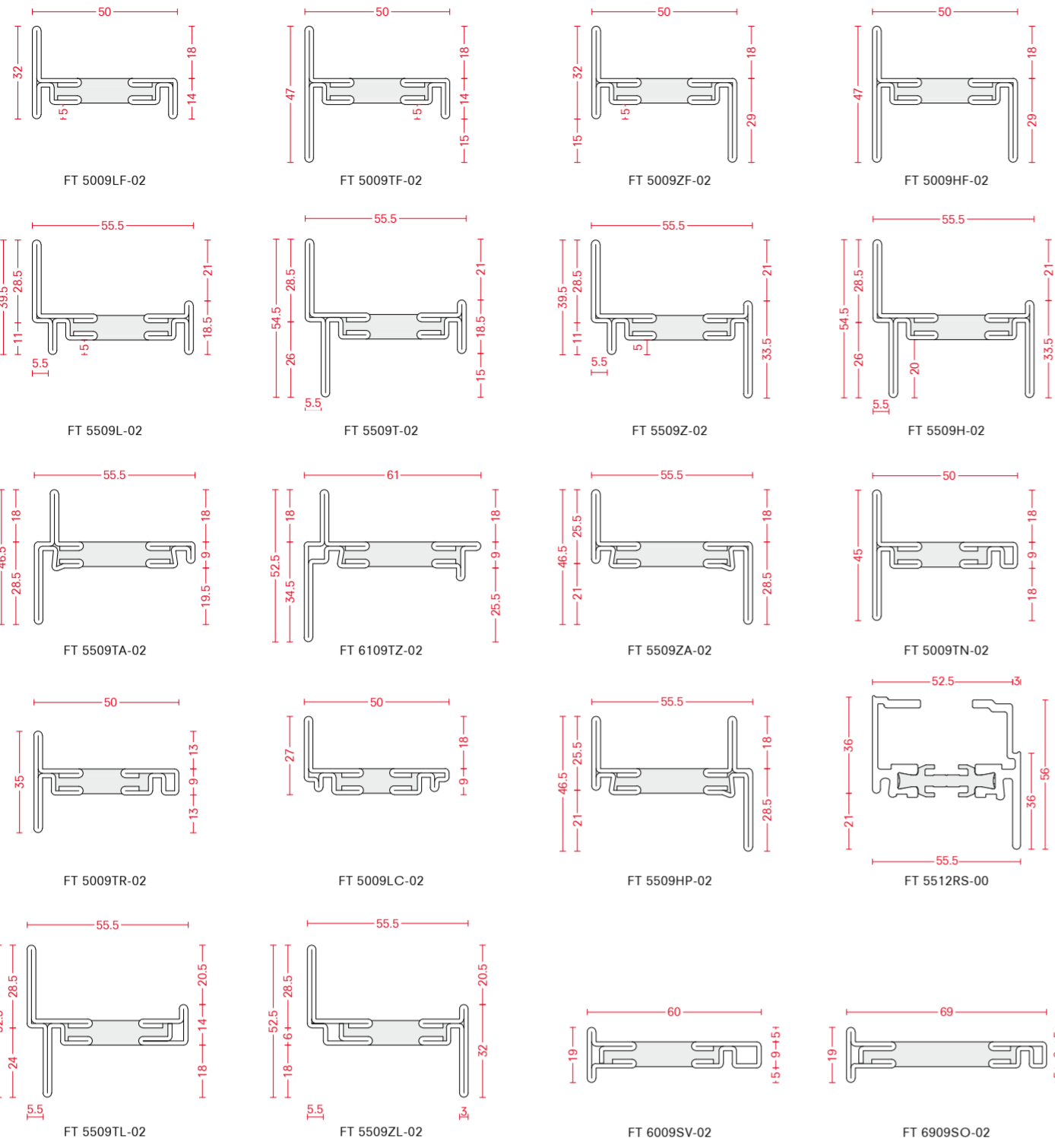
FerroFinestra TB è disponibile anche in Bronzo Architettonico. Consulta l'apposita brochure.



# FerroFinestra W50 TB

profile range

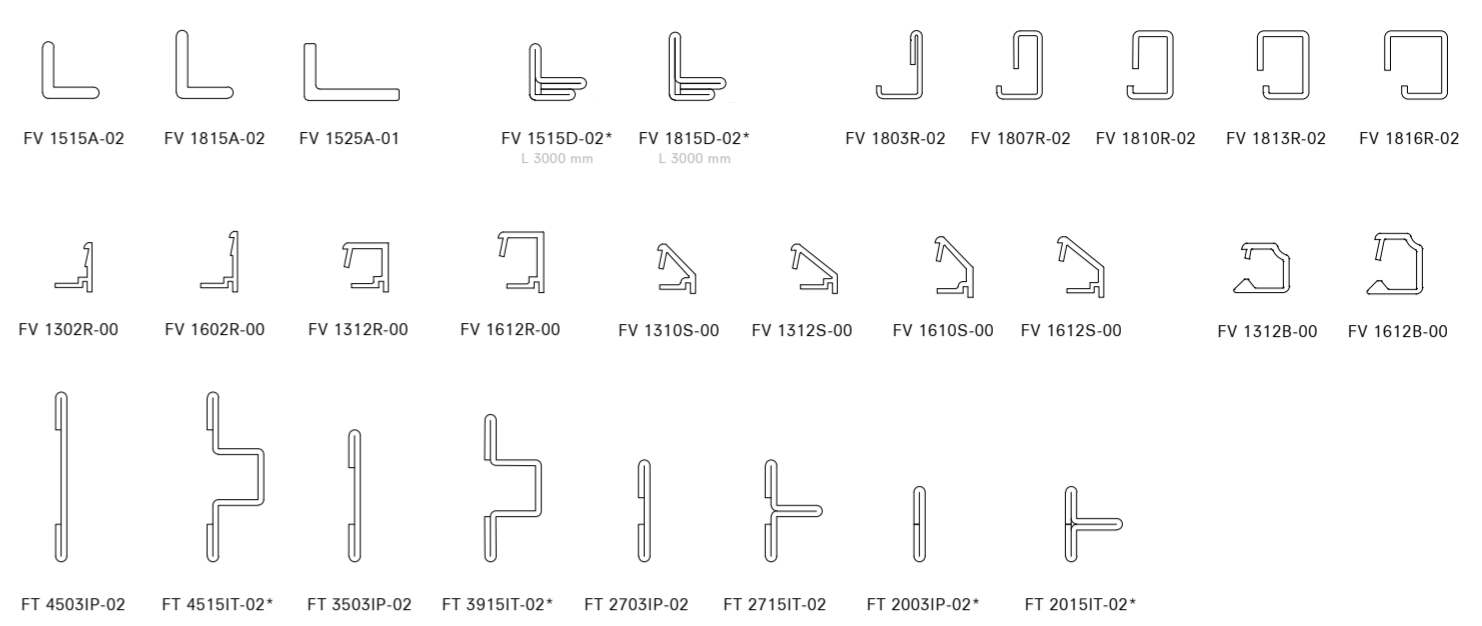
-00 Aluminium -02 Galvanized steel



glazing beads

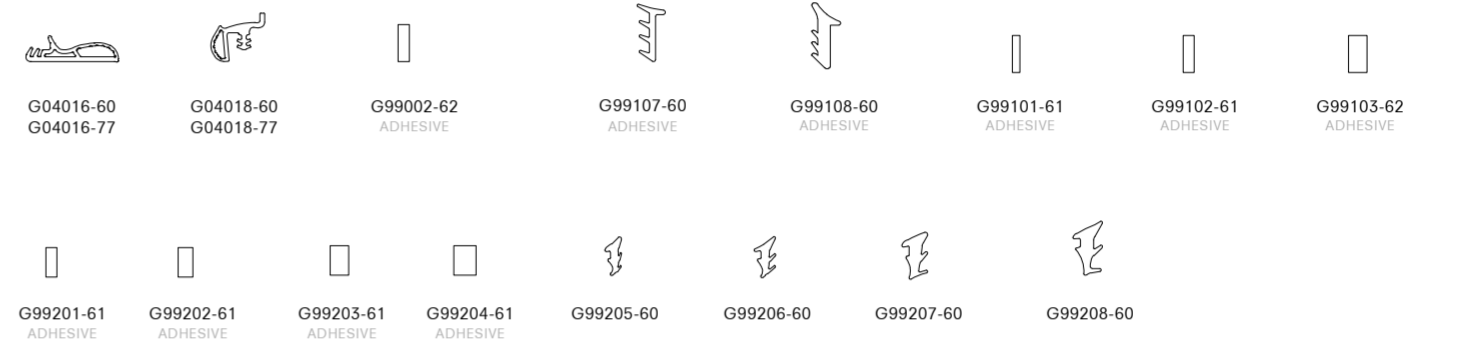
-00 Aluminium -01 Hot rolled steel -02 Galvanized steel

\*on request - minimum quantity required



gaskets

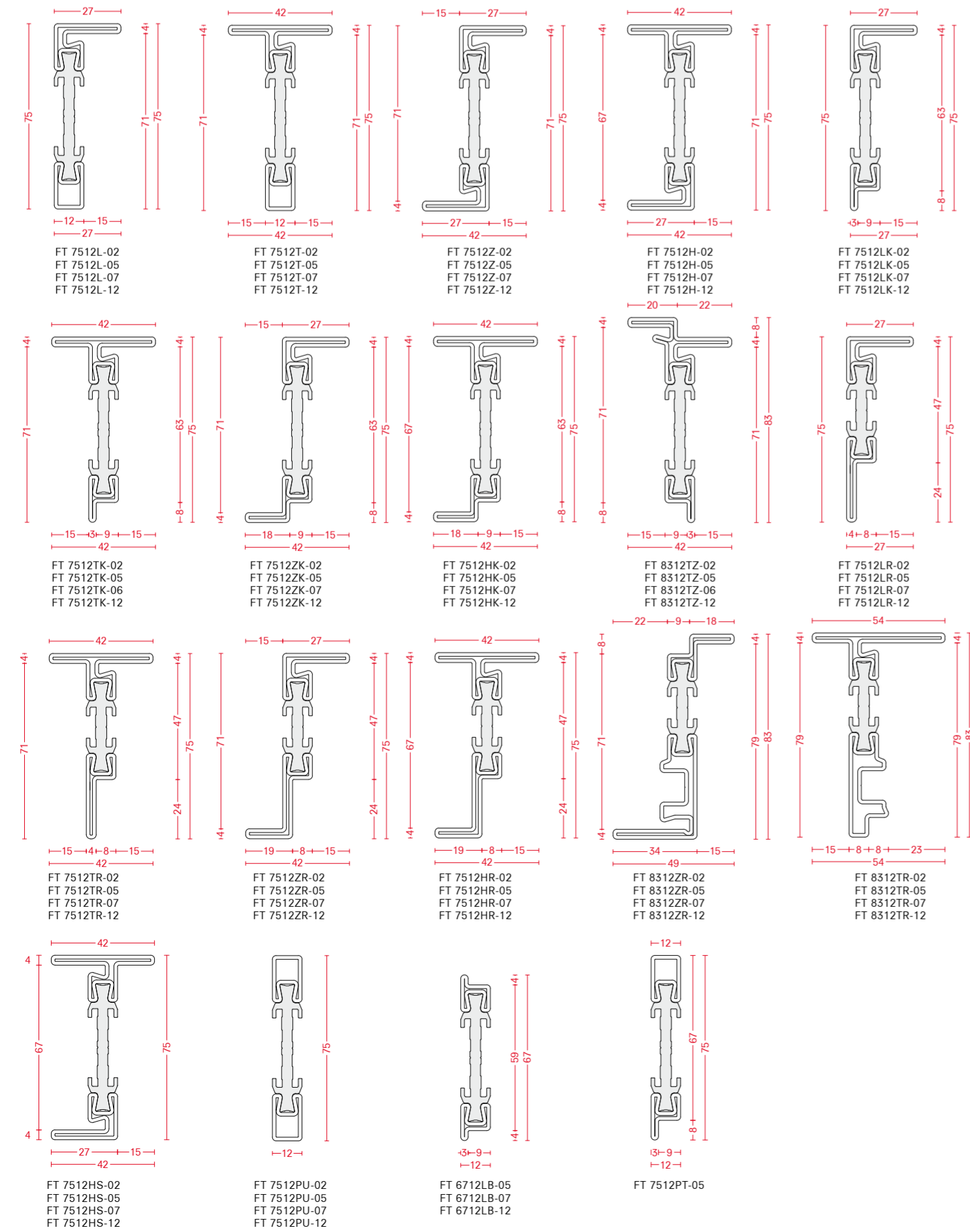
-60 Black EPDM -61 Neoprene -62 PVC -77 White EPDM



# FerroFinestra W75 TB

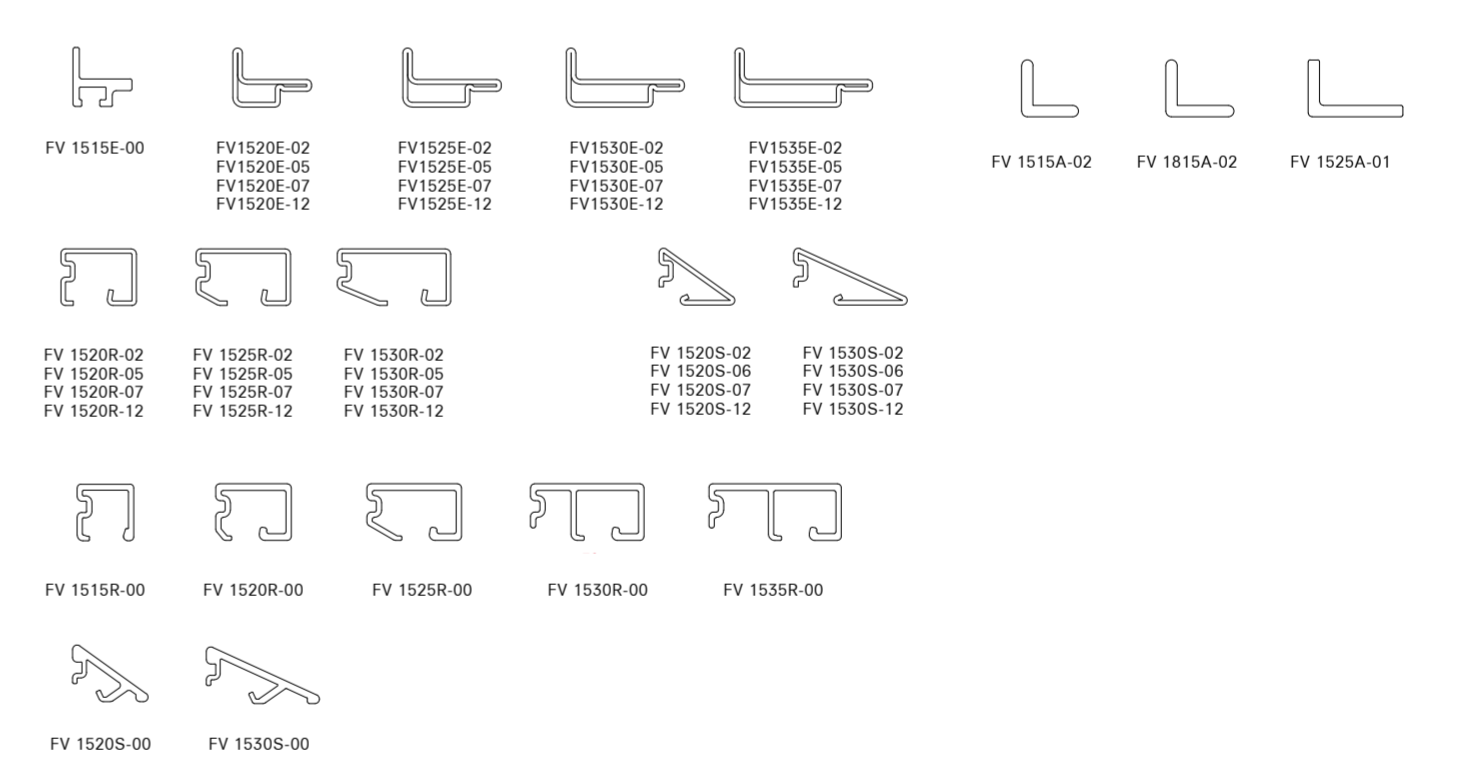
profile range

-02 Galvanized steel -05 Stainless steel AISI 316L 2B -07 Cor-Ten steel -12 Bright steel



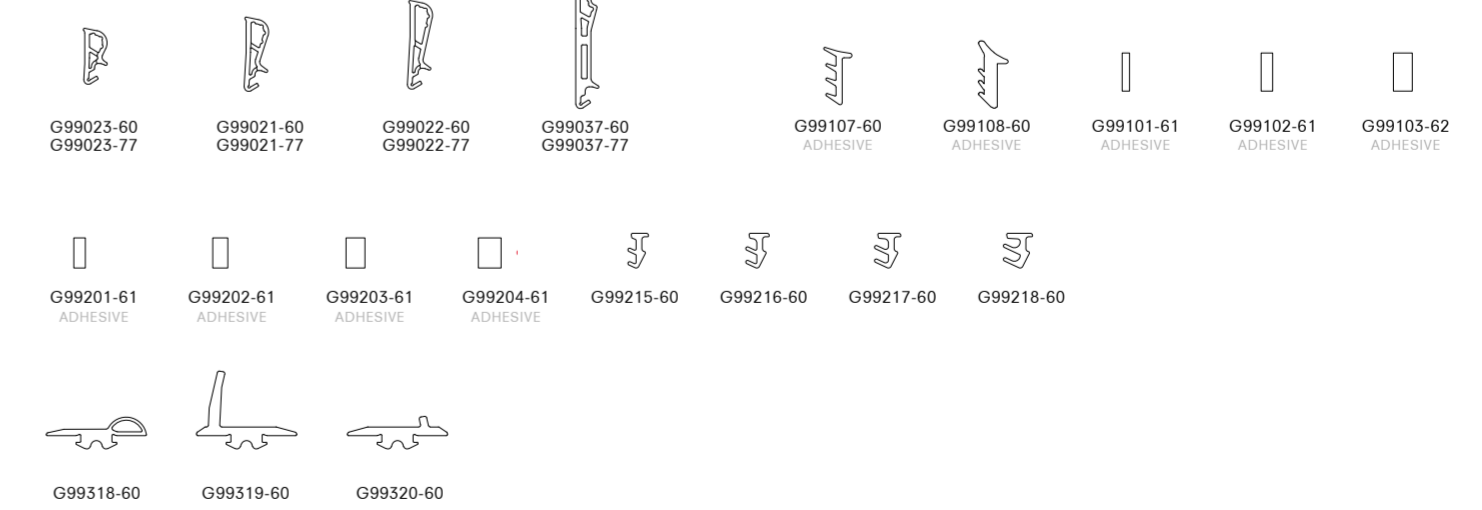
glazing beads

-00 Aluminium -01 Hot rolled steel -02 Galvanized steel -05 Stainless steel AISI 316L 2B -06 Satin stainless steel AISI 316L -07 Cor-Ten steel -12 Bright steel



gaskets

-60 Black EPDM -61 Neoprene -62 PVC -77 White EPDM

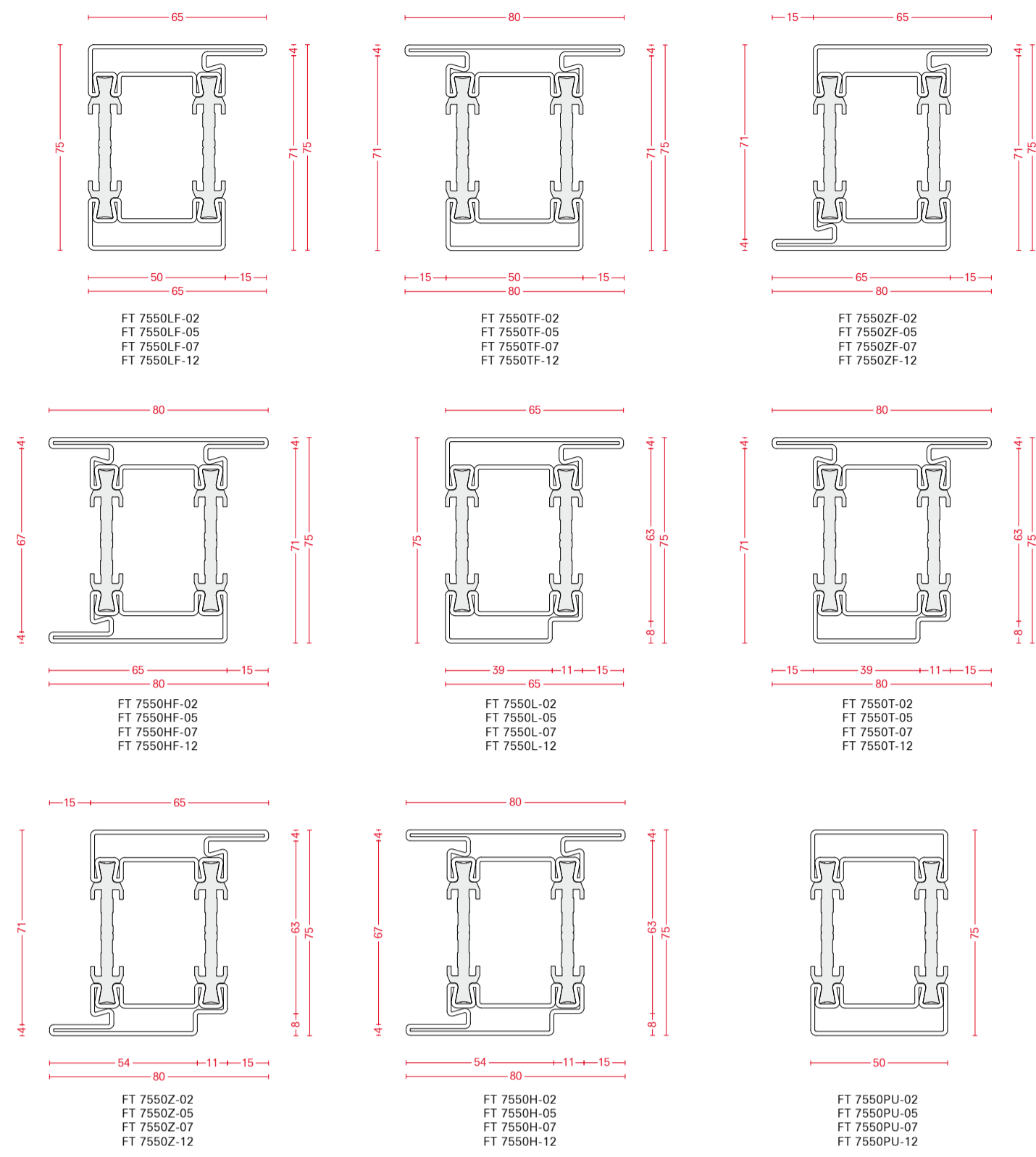




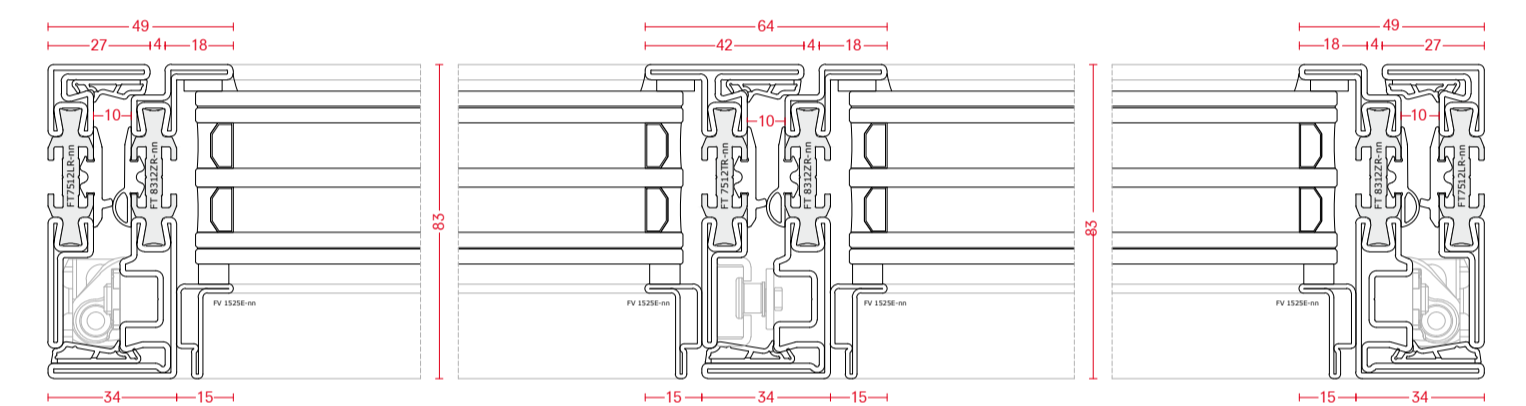
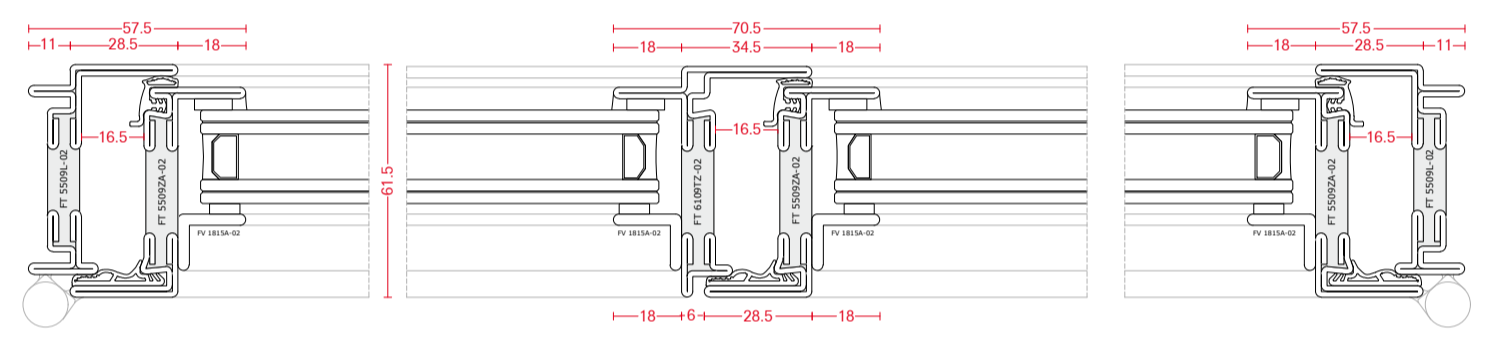
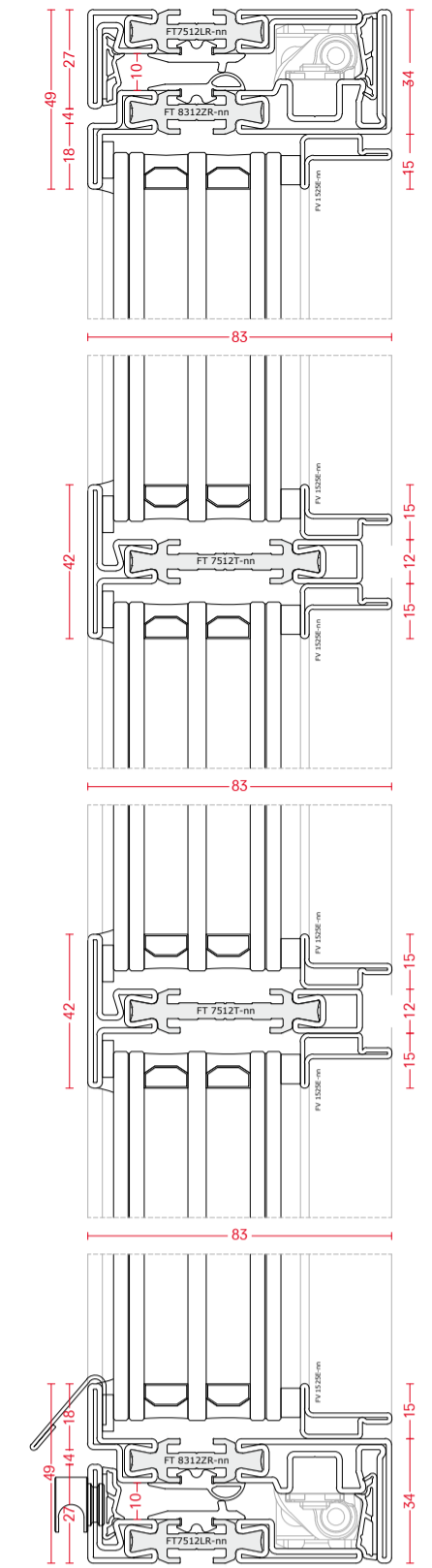
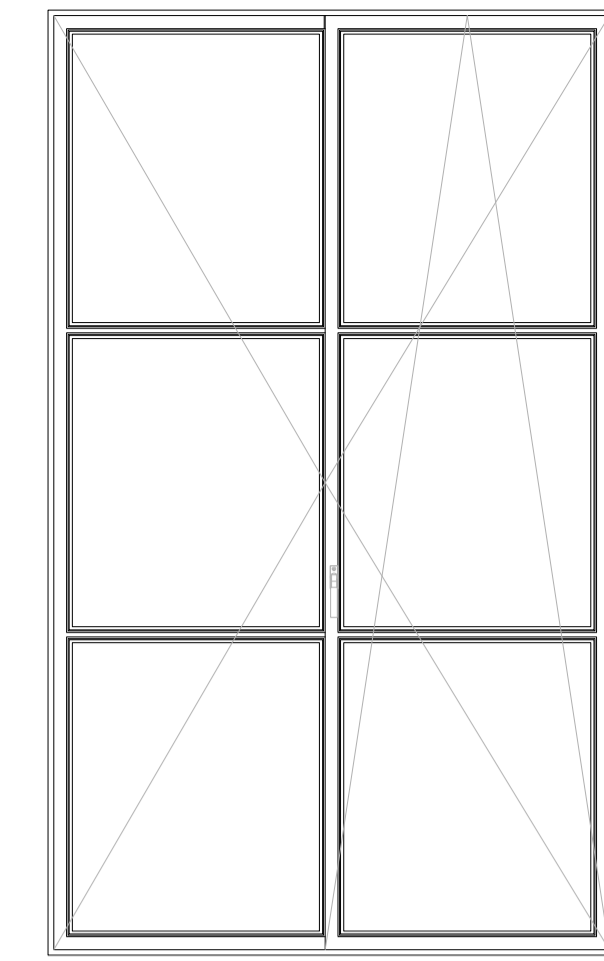
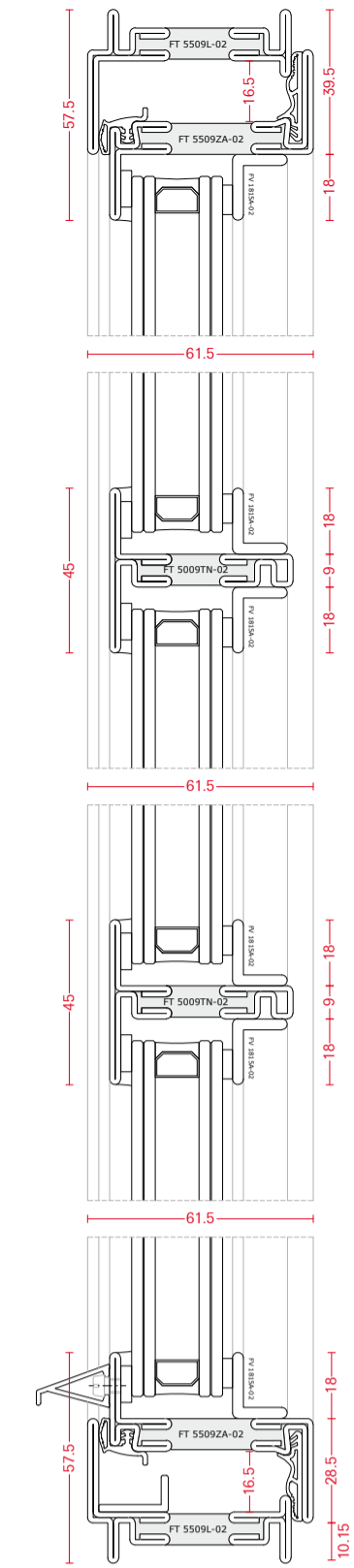
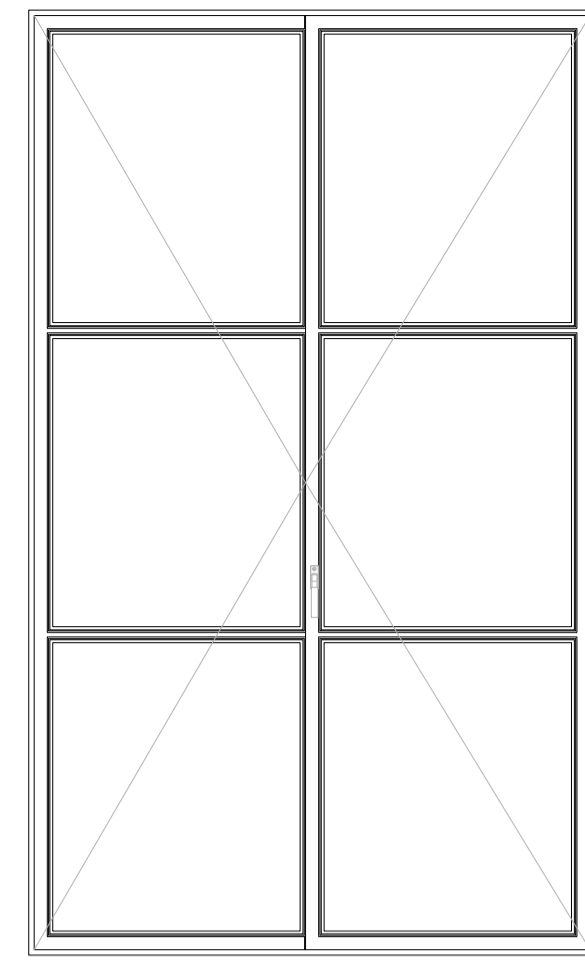
# FerroFinestra D75 TB

profile range

-02 Galvanized steel -05 Stainless steel AISI 316L 2B -07 Cor-Ten steel -12 Bright steel



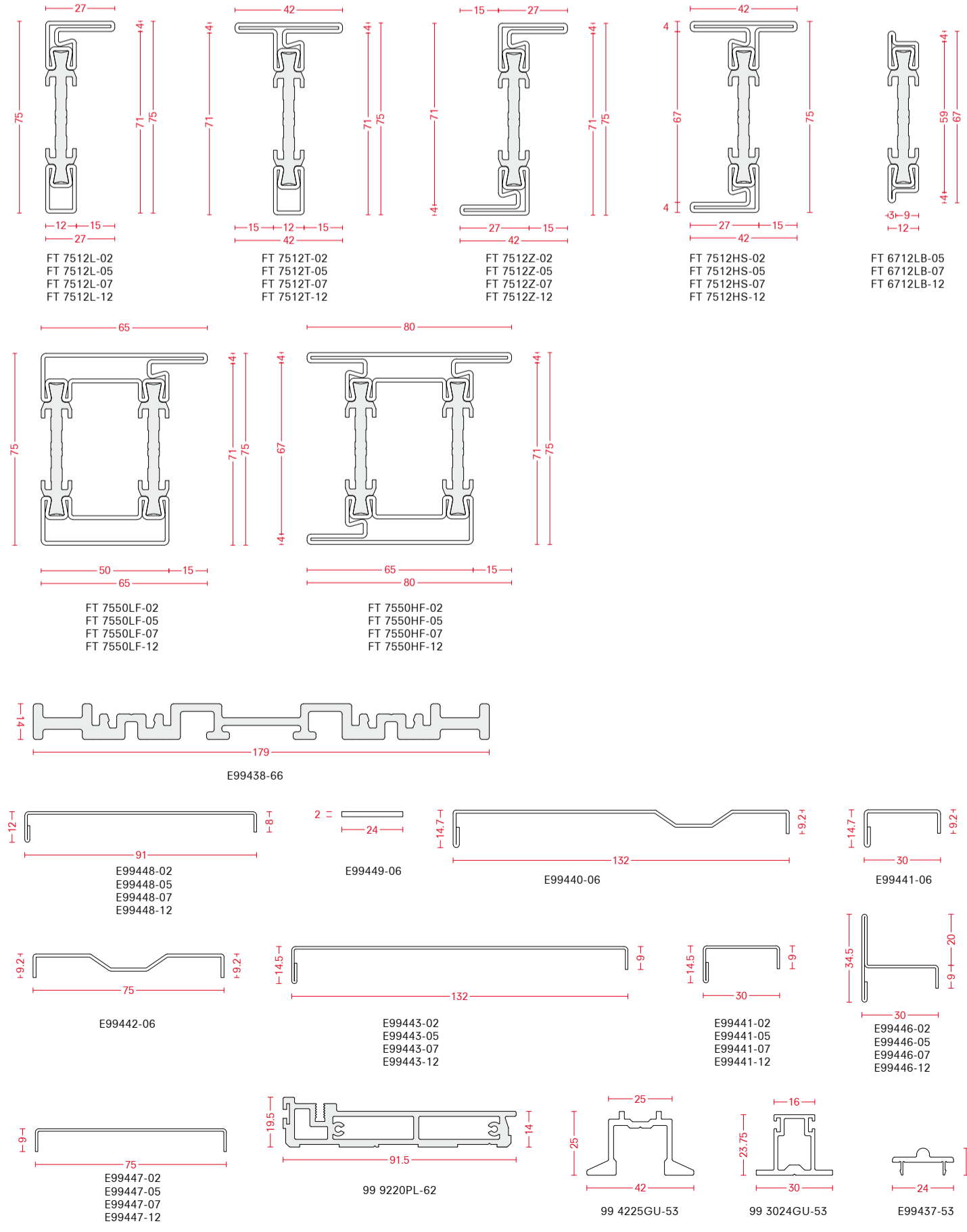
For glazing beads and gaskets, please see FerroFinestra W75 TB.



# FerroFinestra WLS75 TB - Lift & Slide

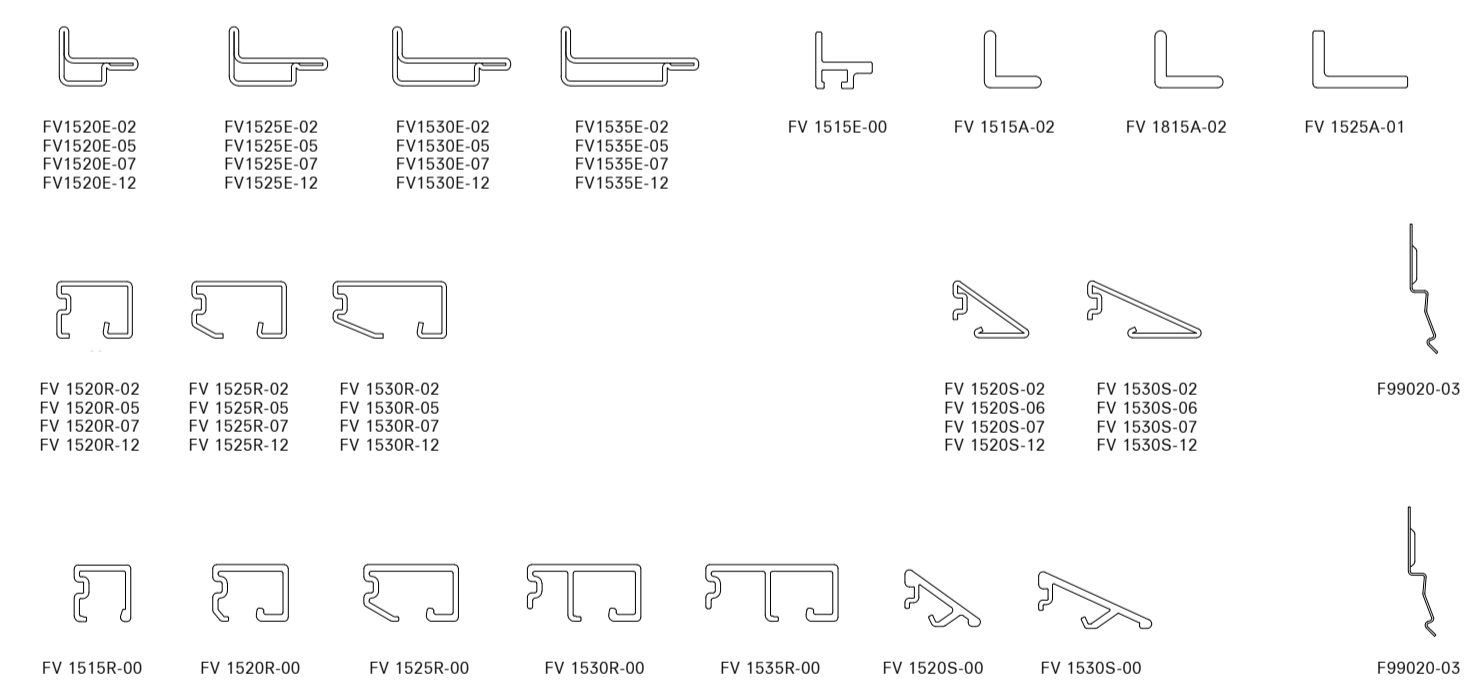
profile range

-02 Galvanized steel -05 Stainless steel AISI 316L 2B -06 Satin stainless steel AISI 316L -07 Cor-Ten steel -12 Bright steel  
-53 Aluminium electrocolor black -62 PVC -66 GRP



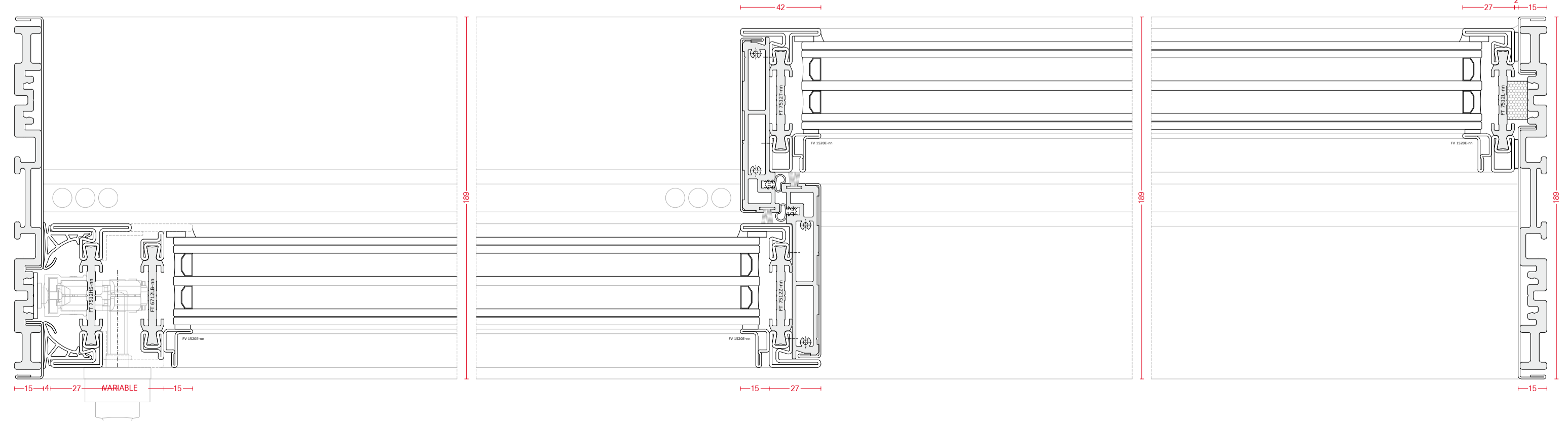
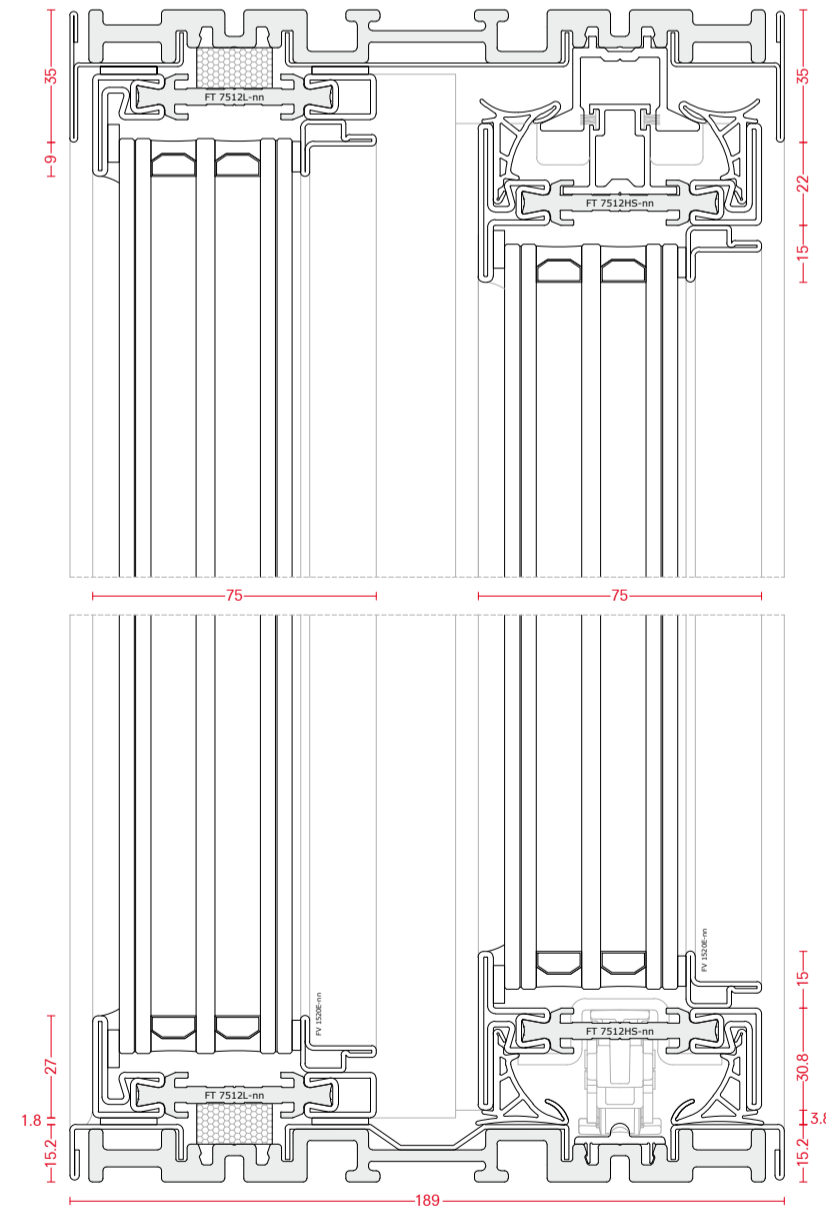
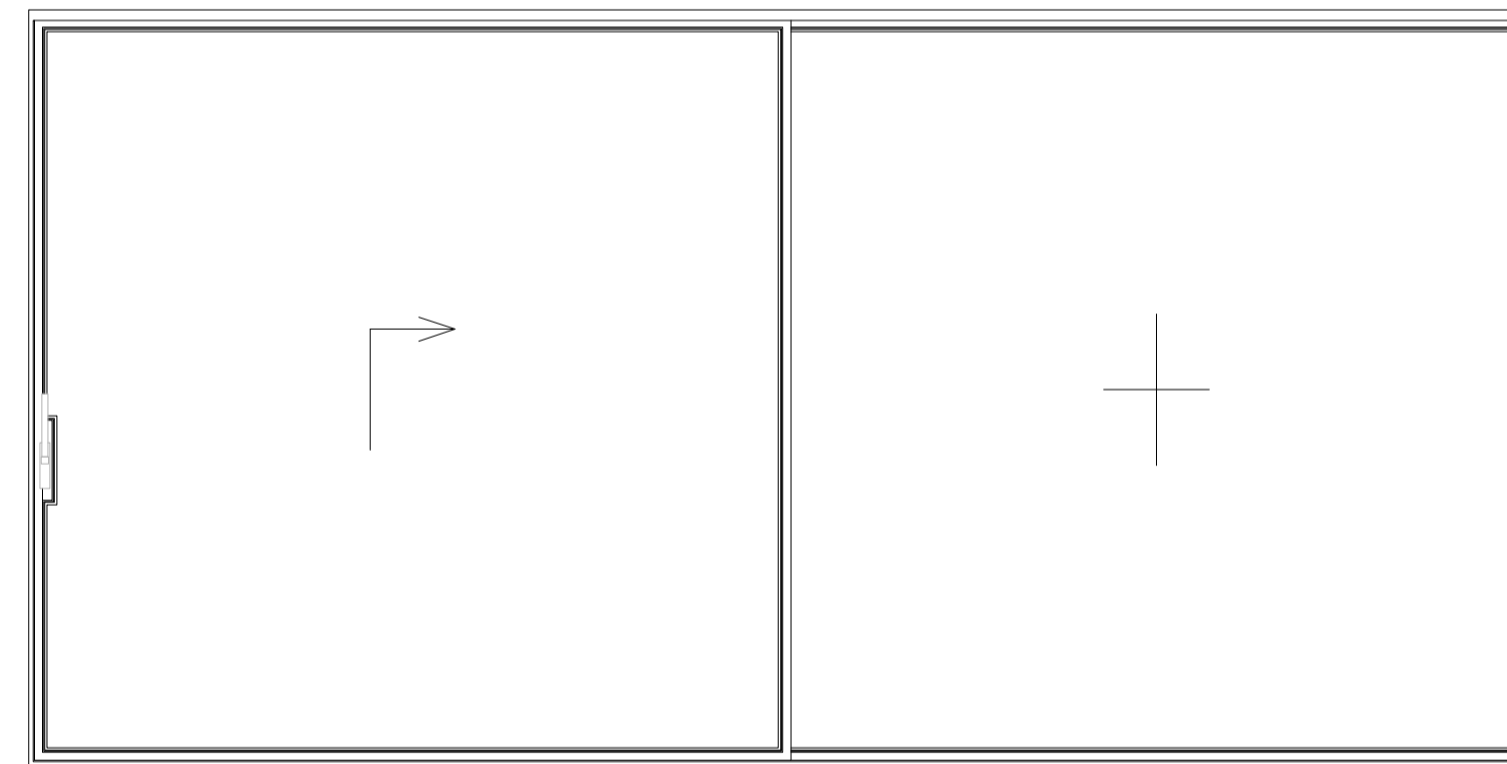
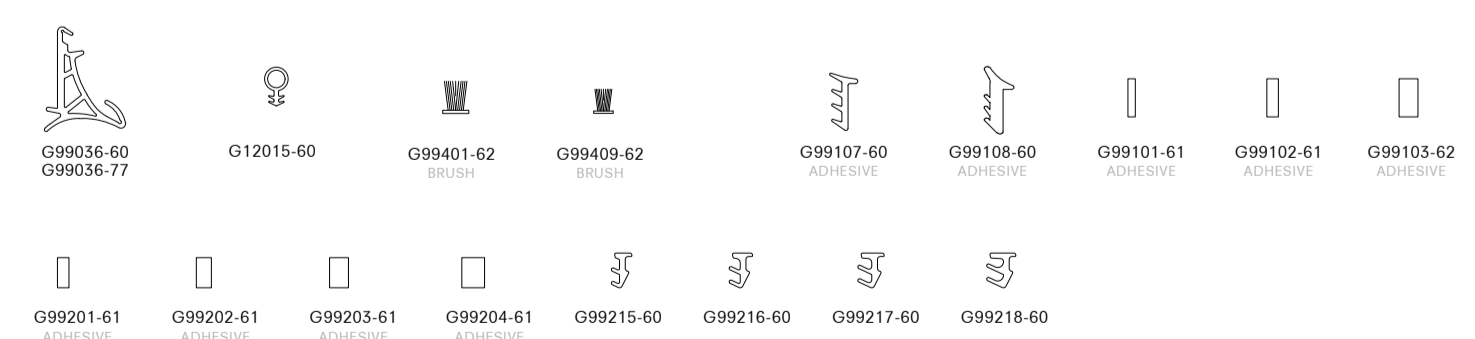
glazing beads

-00 Aluminium -01 Hot rolled steel -02 Galvanized steel -03 Stainless steel AISI 304 2B -05 Stainless steel AISI 316L 2B  
-06 Satin stainless steel AISI 316L -07 Cor-Ten steel -12 Bright steel



gaskets

-60 Black EPDM -61 Neoprene -62 PVC -77 White EPDM





## **DISCLAIMER**

We reserve the right to make technical improvements or modifications of any type even during the validity of this catalogue without prior notice to the customer. Ottostumm | Mogs takes no liability for misprints or mistakes in scale reproductions. No part of this catalogue may be published, distributed, extracted, reused or reproduced in any form except under written permission by Ottostumm | Mogs. Technical drawings are for guidance only and must be studied and verified from a mechanical, functional and static point of view, relieving the companies of every responsibility of any kind. For all the rest, please refer to our sale conditions.

## **AVVERTENZE**

Ci riserviamo la facoltà di apportare miglioramenti tecnici o modifiche di qualsiasi tipo anche nel corso di validità del presente catalogo senza alcun preavviso. Nessuna responsabilità è imputabile a Ottostumm | Mogs per errori tipografici o nelle riproduzioni in scala. È vietata la riproduzione anche parziale, la pubblicazione, la distribuzione, il riutilizzo con qualsiasi mezzo effettuato o l'estrazione in copia del presente catalogo se non con preventiva autorizzazione scritta da parte di Ottostumm | Mogs. I disegni tecnici sono puramente indicativi, ogni applicazione deve essere studiata e verificata da un punto di vista meccanico, funzionale e statico, sollevando Ottostumm | Mogs da ogni responsabilità di qualsiasi tipo. Per tutto il resto, si prega di fare riferimento alle condizioni di vendita delle due società.

**OTTOSTUMM | mogs**

### **OTTOSTUMM SA**

Via Baragge, 2 - 6855 Stabio - Switzerland

### **Mogs srl unipersonale**

Viale Trento e Trieste, 12 - 31100 Treviso - Italia

[ottostumm-mogs.com](http://ottostumm-mogs.com)